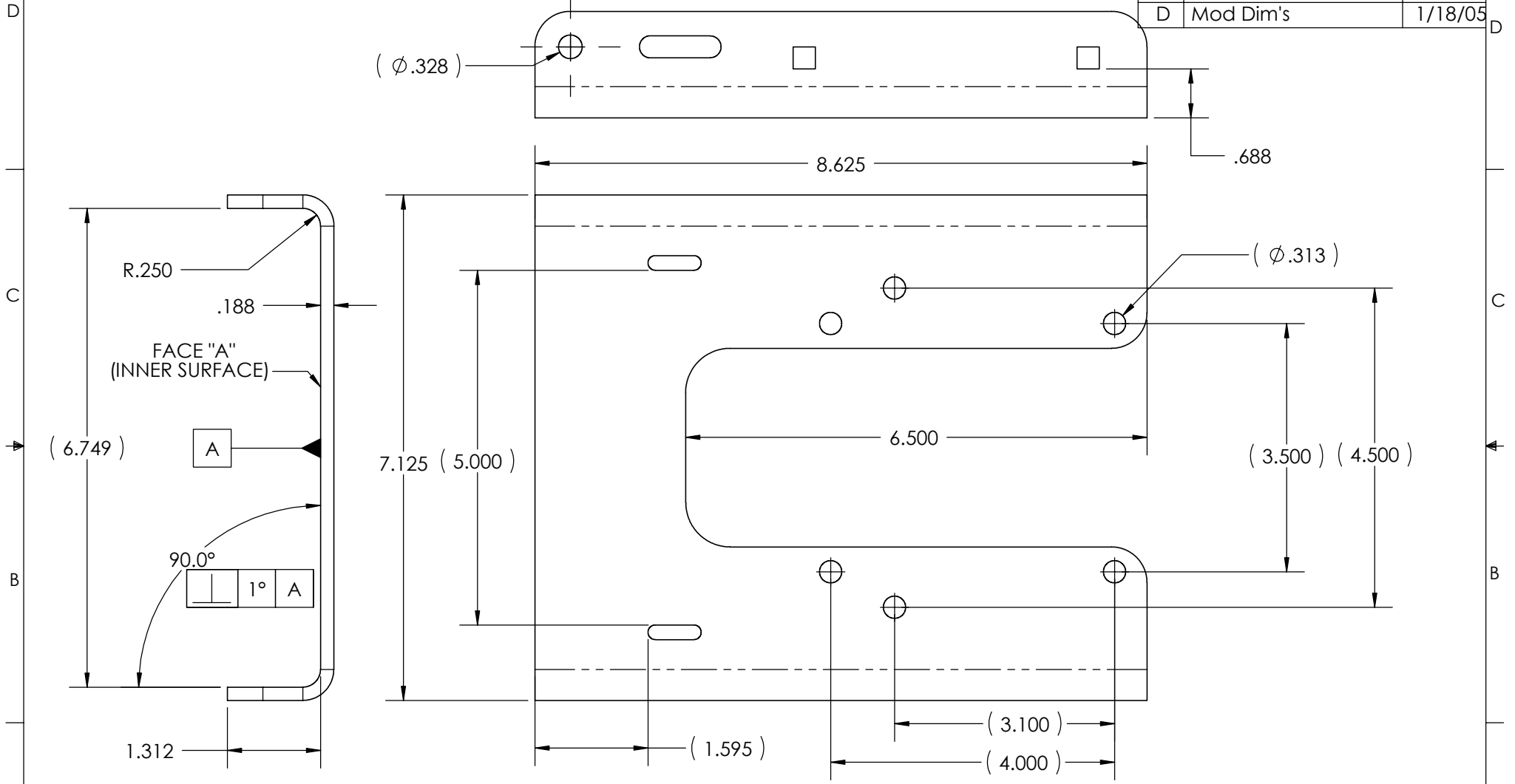


THE INFORMATION CONTAINED IN THIS DRAWING IS THE SOLE PROPERTY OF IRONWOOD PACIFIC, INC. ANY REPRODUCTION IN PART OR WHOLE WITHOUT THE WRITTEN PERMISSION OF IRONWOOD PACIFIC, INC IS PROHIBITED.

Rev	Description	Date
A	Initial release	1/30/04
B	Eliminate ctr hole	3/19/04
C	Mod Dim's	8/26/04
D	Mod Dim's	1/18/05



- NOTES:
- PART SHALL BE FREE OF BURRS, SHARP EDGES AND CORNERS, CORROSION AND FOREIGN MATERIAL.
 - MATERIAL: 5052 H32.
 - FINISH: ANODIZED, GRAY NATURAL, PER MIL-A-8625E (CHROMIC ANODIZE), DEBURRED AND GRAINED ON FACE "A".
 - DIMENSIONS ARE SYMMETRIC ABOUT CENTERLINE.

UNLESS OTHERWISE SPECIFIED
DIMENSIONS ARE IN INCHES
TOLERANCES ARE:
DECIMALS ANGLES
.X + .05 + 1.0 DEG
.XX + .01 + 1.0 DEG
.XXX + .005 + 0.5 DEG

IRONWOOD PACIFIC, INC.

STABILIZER

APPROVALS DATE

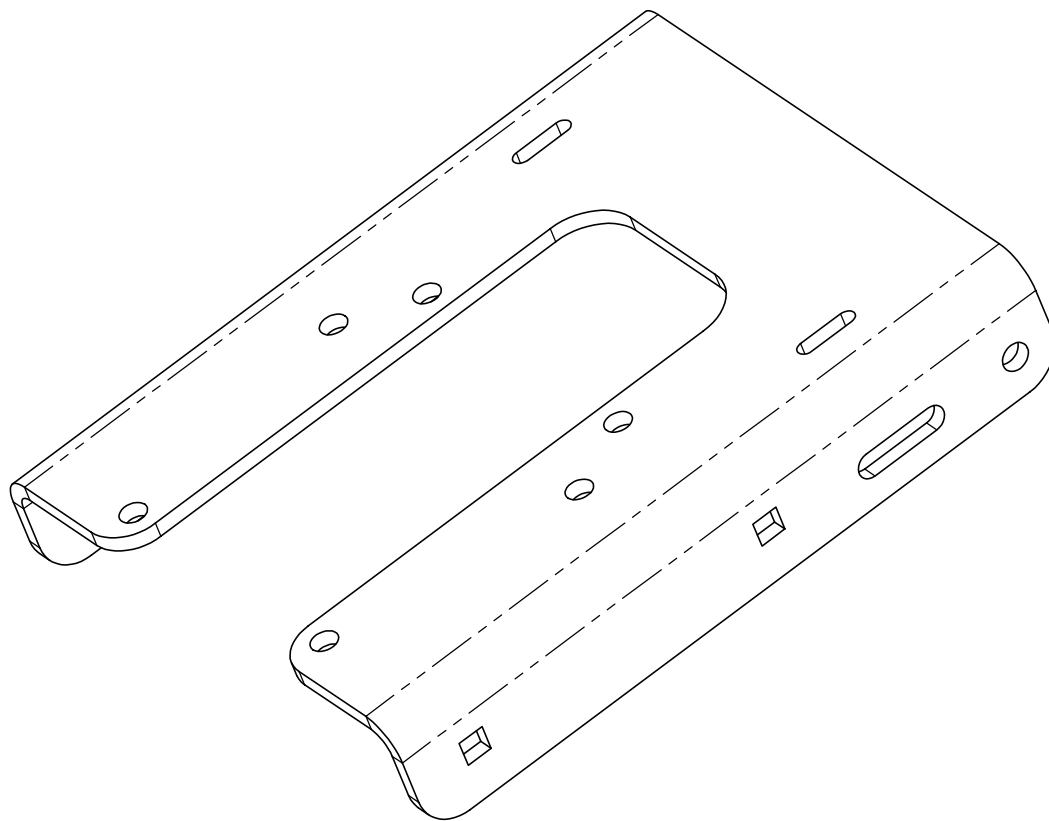
RESP ENG BT 1/29/04

CAD GENERATED DRAWING,
DO NOT MANUALLY UPDATE
DO NOT SCALE DRAWING

SIZE A DWG. NO. 03-1091 REV. D

SCALE CAD FILE: Stabilizer SHEET 1 OF 3

THE INFORMATION CONTAINED IN THIS DRAWING IS THE SOLE PROPERTY OF IRONWOOD PACIFIC, INC. ANY REPRODUCTION IN PART OR WHOLE WITHOUT THE WRITTEN PERMISSION OF IRONWOOD PACIFIC, INC IS PROHIBITED.



UNLESS OTHERWISE SPECIFIED
DIMENSIONS ARE IN INCHES
TOLERANCES ARE:
DECIMALS ANGLES
.X + .05 + 1.0 DEG
.XX + .01 + 1.0 DEG
.XXX + .005 + 0.5 DEG

IRONWOOD PACIFIC, INC.

STABILIZER

APPROVALS	DATE
-----------	------

RESP ENG	BT
----------	----

SIZE	DWG. NO.	REV.
A	03-1091	D

CAD GENERATED DRAWING,
DO NOT MANUALLY UPDATE
DO NOT SCALE DRAWING

SCALE	CAD FILE: Stabilizer	SHEET 2 OF 3
-------	----------------------	--------------

THE INFORMATION CONTAINED IN THIS DRAWING IS THE SOLE PROPERTY OF IRONWOOD PACIFIC, INC. ANY REPRODUCTION IN PART OR WHOLE WITHOUT THE WRITTEN PERMISSION OF IRONWOOD PACIFIC, INC IS PROHIBITED.

